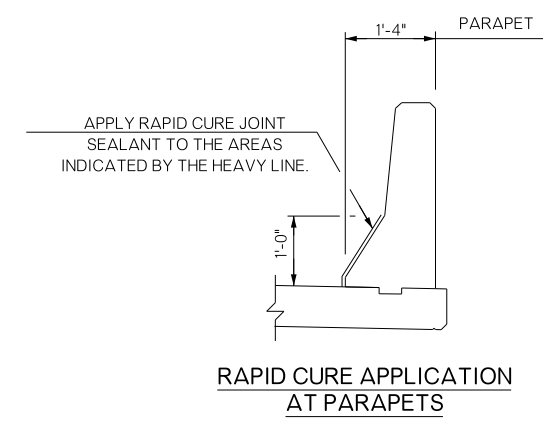
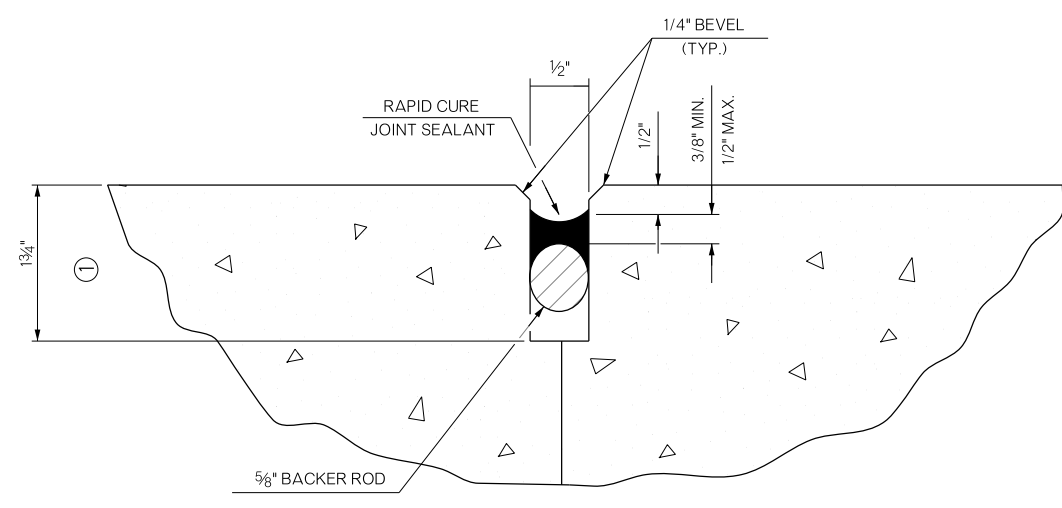
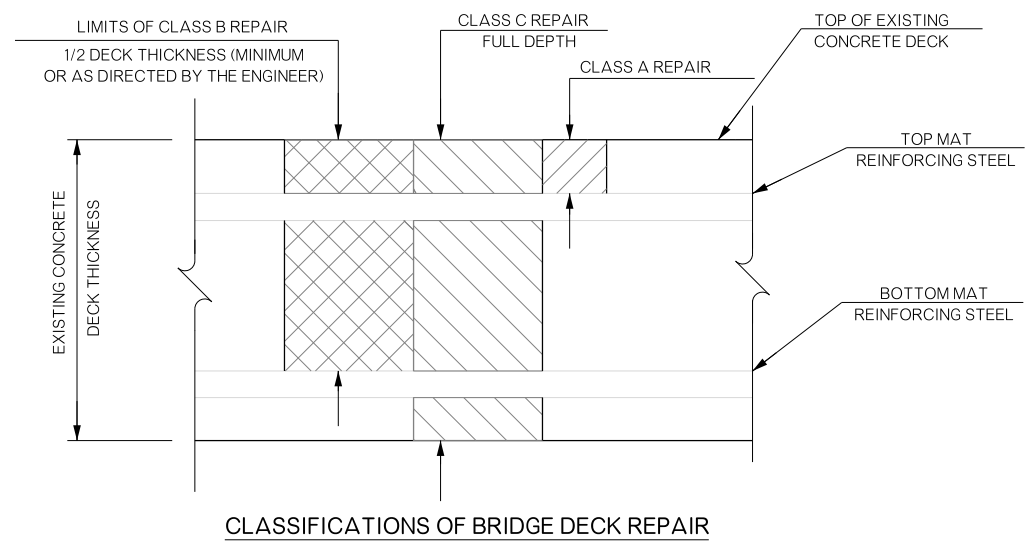
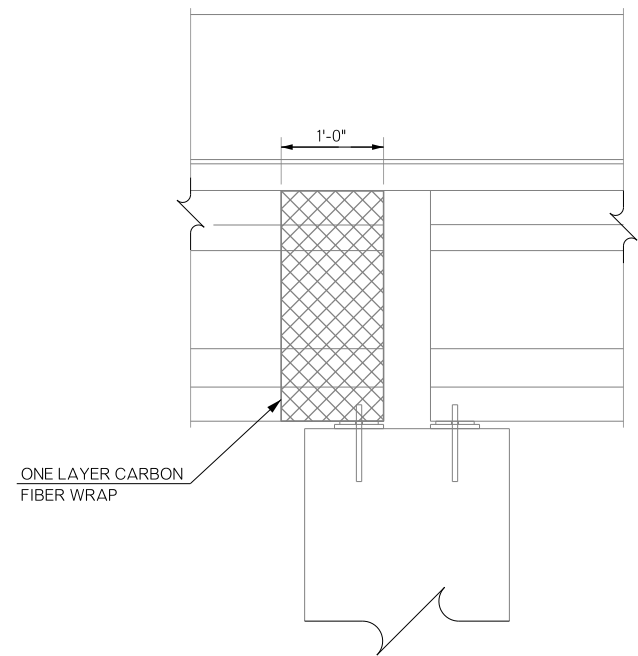
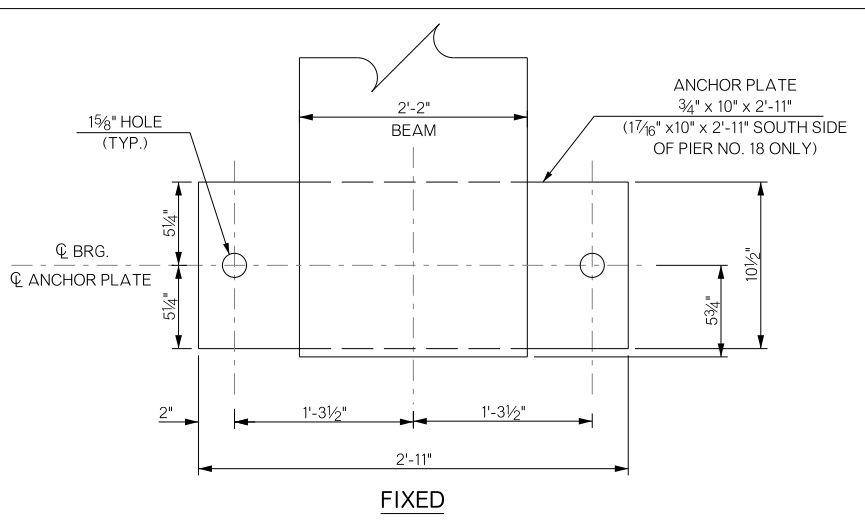
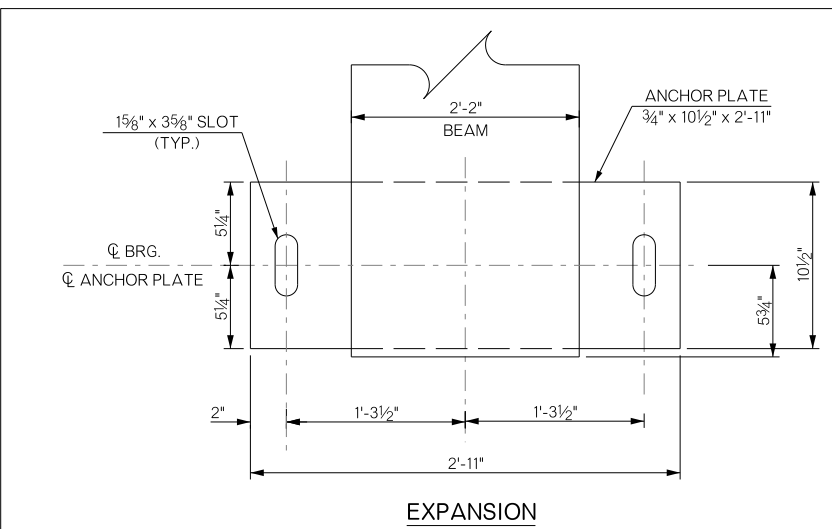


REVISIONS		
REV. NO.	DESCRIPTION	DATE

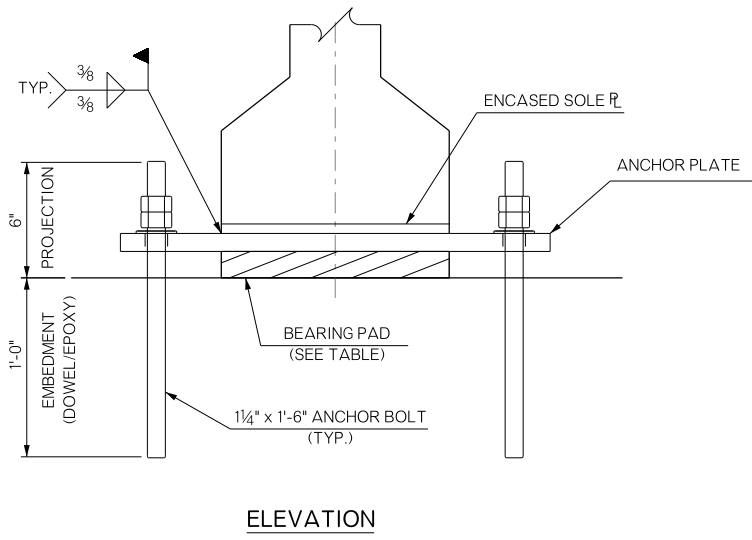


① SAW TO THE DEPTH SHOWN TO PROVIDE CLEAN STRAIGHT SURFACES.

**REHABILITATED CONSTRUCTION JOINTS**  
**SAW AND SEAL**  
**REPAIR BRIDGE ITEM (TYPE D)**



**CARBON-FIBER WRAP BEAM END (TYP.)**  
**REPAIR BRIDGE ITEM (TYPE D)**  
**(BRIDGE 'A' ONLY)**



**NOTES:** WHERE REQUIRED, DRILL OUT OLD ANCHOR BOLTS AND EPOXY NEW BOLTS IN PLACE. STRUCTURAL STEEL AND BOLTS / HARDWARE TO BE AASHTO M164 (ASTM A 325) TYPE 3 WEATHERING.

BEARING PADS 60 DUROMETER ELASTOMERIC PAD				
LOCATION	SIZE T x L x W	COVER LAYER	INNER LAYER	LAMINATE PLATE
EXPANSION	15/16" x 10" x 24 1/2"	2 - 5/16"	1 - 7/16"	2 - 1/8"
FIXED	5/8" x 9 1/2" x 24 1/2"	2 - 1/4"	N/A	1 - 1/8"

**REPLACE BRIDGE ITEM (TYPE A)**

BRIDGE A & B	TULSA COUNTY	Design	N/A	N/A
<b>DETAILS OF REPAIR (BRIDGE A &amp; B)</b>		Detail	DJG	05/16
		Check	KMS	06/16
STATE OF OKLAHOMA		DEPARTMENT OF TRANSPORTATION		Sheet: MAYFIELD Engr: ELYAZGI
JOB/PIECE NO. 31944(04)				SHEET NO. B012